

	Revision 2020/03
<b>Info LOG D-3 V1.05.02</b>	Page 1 of 7

## Content

<b>1 Compatibility</b>	<b>2</b>
<b>2 How to update</b>	<b>3</b>
<b>3 Change log</b>	<b>5</b>

	Revision 2020/03
<b>Info LOG D-3 V1.05.02</b>	Page 2 of 7

## 1 Compatibility

The Firmware is compatible with:


- fw\_LOGD3\_868\_v01\_05\_02.ld3:
  - LOG D-3-868 Data Logger,
  - LOG SF-868 SebaFlow,
  - TDM 300-868
- fw\_LOGD3\_913\_v01\_05\_02.ld3:
  - LOG D-3-913 Data Logger,
  - LOG SF-913 SebaFlow,
  - TDM 300-913
- fw\_LOGD3\_916-IL\_v01\_05\_02.ld3:
  - LOG D-3-916-IL,
  - LOG SF-916-IL SebaFlow,
  - TDM 300-916-IL

	Revision 2020/03
<b>Info LOG D-3 V1.05.02</b>	Page 3 of 7

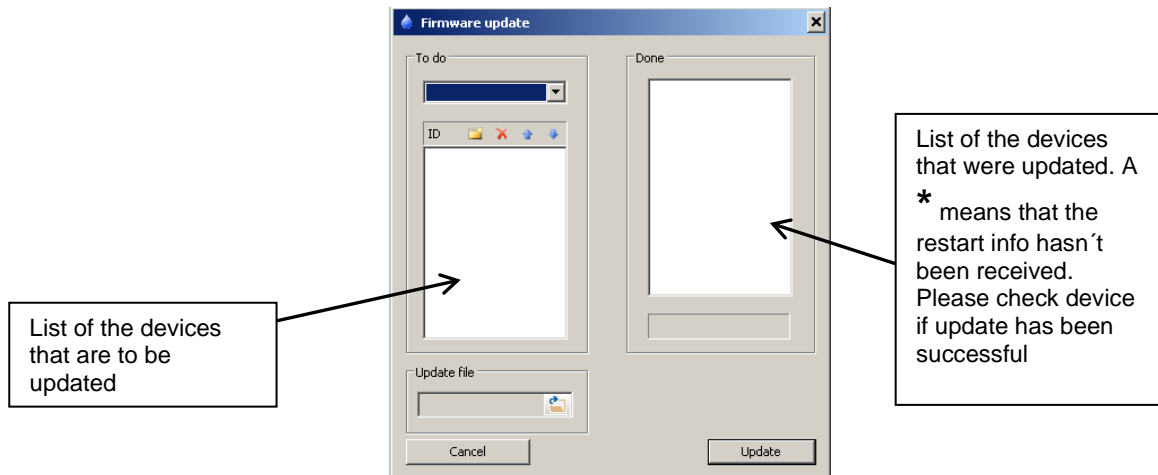
## 2 How to update

SebaKMT makes improved versions of the firmware available in the download area of [www.sebakmt.com](http://www.sebakmt.com) on a regular basis. We recommend that you keep the firmware of all devices current at all times. In order to determine which firmware version is currently installed on a device, you can read the device's programming.

To update the firmware of one or more devices, proceed as follows:

- Open the SebaDataView-3 software.
- Click the water drop symbol  on the top left of the window and select the option **Firmware Update** in the window that opens.

**Result:** The following window opens.

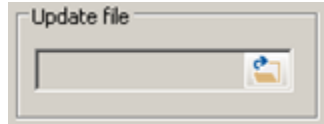


- In the drop-down list in the top left, select the type of devices whose firmware is to be updated. **Choose LogD3**
- Type in the IDs of the devices you want to update. Devices have to be of the type you have chosen in drop down menu [step before].



	Revision 2020/03
<b>Info LOG D-3 V1.05.02</b>	Page 4 of 7

- Locate update file on your PC:



- Click **OK** to start the firmware update.

**Result:** The update file is transferred to the devices and installed there. A bar under the list on the right shows the progress of this process. After the file is installed, each device restarts automatically.

The IDs of the successfully updated devices switch from the left to the right side on the screen. As soon as the firmware update is successfully completed for all devices, a corresponding message appears in the update window.

	Revision 2020/03
<b>Info LOG D-3 V1.05.02</b>	Page 5 of 7

### 3 Change log

- Version 1.00.04
  - Firmware is based on LOG DX Firmware 1.03.01
- Version 1.00.05
  - Usage of internal temperature measurement in logbook and logger configuration
- Version 1.00.06
  - GSM-RSSI-value in logger configuration
  - Optimization of GSM-debugging
  - Channel 1 default setting set to pulse channel if no internal pressure sensor installed
- Version 1.00.10
  - defined timestamp set on switching on the device (01.01.2014, 00:01:00)
  - GSM-messages: additional information on battery-state and GSM-RSSI if enough characters left
  - Emails: complete logger comment appended to the end of each email
  - FTP-Upload routine improved
  - DNS-Error-handling included
  - active channels set according to logger variant after update
  - GSM: reduced trial count from 3 (2x) to 2 (2x) in case of GSM errors
- Version 1.00.11
  - GSM: bug with sms length calculation fixed (16 bytes for header)
  - GSM: minmax.csv-upload, if SIM900 is installed
- Version 1.00.12
  - GSM-Debugging via RF added
  - GSM: eventlist-upload – only new events are uploaded instead of always all events
  - GSM: bugfix of SIM900 CTS-Low-issue
  - GSM: ftp\_config.bin-Upload, if no file is found on server at download
- Version 1.01.02
  - 3G modem support added and GSM functions optimized
- Version 1.01.03
  - Logbook entry for logger restarts
  - Modem reset recognition and notification (sign for low battery)

	Revision 2020/03
<b>Info LOG D-3 V1.05.02</b>	Page 6 of 7

- Version 1.01.04
  - minmax.csv: new line for every flow-channel
  - bugfix in ftp-config -> eventlist now (de-)activatable
  - steptest with external power-supply: timeout removed
- Version 1.01.05
  - changes for SebaFlow
  - optimization of turn-on and -off procedure
- Version 1.01.06
  - bugfix in dataflash-function
- Version 1.02.00
  - csv-mode integrated
  - FTPS- and SMTPS-support integrated
  - storing of actual total-flow-values in config
  - GSM: RSSI-testmode integrated
- Version 1.02.01
  - changes in dataflash-routines - fixes pressure-shock issue
  - csv-mode optimized
- Version 1.02.02
  - bugfix with not performing ftp-configuration
  - csv-mode optimized
- Version 1.02.03
  - bugfix in summary-messages - now viewing correct values in case of message-resend
  - mail-settings now changeable via ftp
  - handling if only mail-cc was entered - move to mail-recv
- Version 1.03.00
  - daily clock synchronisation of GSM-loggers
  - check SMS-text for unvalid signs (in comment e.g.)
  - bug fixed: alarms on Sundays
- Version 1.03.01
  - alarm handling optimized (min <-> max transition)
  - usage of absolute value for determining min and max value in minmax-file
- Version 1.04.00
  - FTP firmware update feature added with automatic time sync and measurement
  - start after logger restart

	Revision 2020/03
<b>Info LOG D-3 V1.05.02</b>	Page 7 of 7

- advanced FTP configuration feature added
- SebaFlow: UDM alarm message in cloud added
- Version 1.04.01
  - Change Watermeter startvalue only if explicitly required
  - Timestamps in minmax.csv to full hours if a sampling interval of on hour is selected
- Version 1.05.00
  - SebaFlow: trigger data upload after reset due to weak battery when mains supply is available again
  - Radio request for triggering data upload added
  - Realtime measurement of pulse values now updated with 1s interval
  - GSM check delivers progress messages
  - Automatic timezone synchronisation configurable
  - Security features added:
    - encryption of user sensitive data
    - possibility to configure a password protection to secure the radio communication (3 user levels with different permissions)
  - Pressure analysis mode added:
    - pressure is measured via internal pressure sensor with a sample rate of 100Hz
    - specific parameters (maximum, minimum, average and deviation) are being stored (user selectable interval: 5s - 60s)
- Version 1.05.01
  - Bug that pressure analysis mode might block gsm actions fixed
- Version 1.05.02
  - Optimization of encryption handling in remote configuration
  - Possibility to activate encryption by remote configuration